


Greenway™ Ascot LED Luminaire The better, brighter light fixture

FEATURES

Ideal for pathways, trails, parks, driveways, private roads, and other general area lighting applications.



SPECIFICATIONS

- Available in 11.8 watts and 18.9 watts.
- Super efficient, bright, white light, state of the art LED light source; most efficient white light source in its wattage range.
- Excellent color rendering optimizes human visual acuity and contrast, offering best in class night-time (scotopic) vision.
- “Instant-on” – no warm up or cold start issues. Starting and re-igniting period: less than 100 milliseconds.
- No risk of hazardous disposal – unlike CF, CCFL, LPS and HPS which contain mercury.
- Maximizes light utilization, providing a uniform light pattern with concentrated light where it is needed and low light pollution outside of light distribution field. No skyward pollution.
- IDA approved dark sky friendly.
- Significantly less energy and maintenance costs with reduced greenhouse gas emissions.
- Luminaire provides IP65 protection
- CE Approved 

DATA

LED Type	Strip Type / 70,000 Hours (L-70)
LED Total Power	11.8 watts & 18.9 watts
Dimensions (L x W x H)	11" x 5.25" x 9" (27.9 cm x 13.3 cm x 22.9 cm)
Weight	6.0 lbs. (2.72 kg)
LED Enclosure	IP 65
Power	12V
LED Driver Efficiency	81% @ 12V
Luminous Efficacy	80 Lumens per watt
Color Temperature (CCT)	5100K
Operating Temperature (Amb.)	-40 F to 120 F
Housing	Die cast corrosion resistant electroplated aluminum
Lens	Polycarbonate Hemi Dome lens / "O" Ring Sealed
Suggested Mounting Height	15 ft (20' ft direct burial pole incl)



Sol 
Reliable. Renewable. Remarkable.

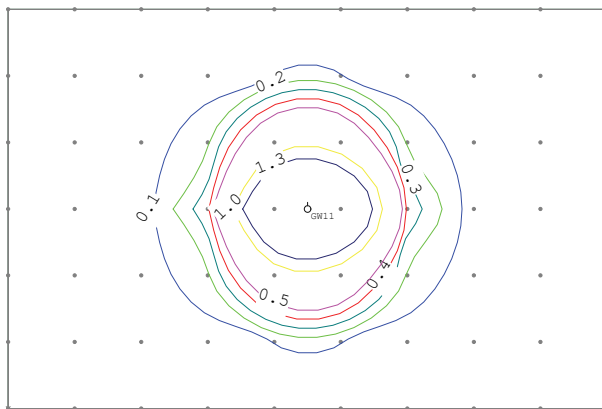
Greenway™ Ascot LED Luminaire

The better, brighter light fixture



Photometric Template Greenway™ 11.8 watt @ 12 Feet

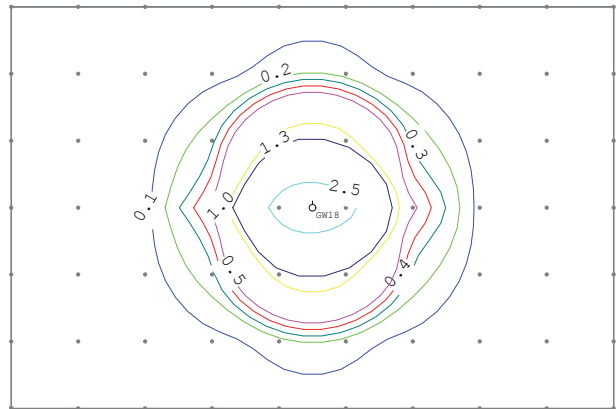
Typical Grid: Horizontal Illuminance Statistics
 Ave: 0.14 fc Max/Min: Undefined
 Max: 2.04 fc Ave/Min: Undefined
 Min: 0.00 fc Std. Dev.: 0.38



60 x 90 Foot Grid
(18.29 x 27.43 Meter Grid)

Photometric Template Greenway™ 18.9 watt @ 12 Feet

Typical Grid: Horizontal Illuminance Statistics
 Ave: 0.20 fc Max/Min: Undefined
 Max: 2.87 fc Ave/Min: Undefined
 Min: 0.00 fc Std. Dev.: 0.53



60 x 90 Foot Grid
(18.29 x 27.43 Meter Grid)



rev. 0410 MRKT-GREEN-002