

2 Quad LED Cobra Head

The better, brighter light fixture



FEATURES

Ideal for roadway, street lighting, intersections, parking lots, boat ramps, gates, perimeter security, parks, outside storage areas, and other general area lighting applications.

SPECIFICATIONS

- Super efficient, bright, white light, state of the art LED light source; most efficient white light source in its wattage range.
- Excellent color rendering optimizes human visual acuity and contrast, offering best in class night-time (scotopic) vision.
- “Instant-on” – no warm up or cold start issues. Starting and re-igniting period: less than 100 milliseconds.
- No risk of hazardous disposal – unlike CF, CCFL, LPS and HPS which contain mercury.
- Maximizes light utilization, providing a uniform light pattern with concentrated light where it is needed and low light pollution outside of light distribution field.
- IDA approved dark sky friendly versions of this luminaire are available. Contact your Sol representative for details.
- Significantly less energy and maintenance costs with reduced greenhouse gas emissions.
- Luminaire provides condensation prevention and adequate ventilation.

DATA

LED Type	Strip Type / 70,000 Hours (L-70)
LED Total Power	30 watts
Dimensions	Lens Dia. – nominal 12.0 in. / 30.48 cm Height, without lens – 5.0 in. / 12.7 cm Height, including lens – 8.0 in. / 20.32 cm Length – 27.0 in. / 68.58 cm. Max Width – 13.5 in. / 34.29 cm.
Weight	15.0 lbs. / 6.8 kg
LED Enclosure	Water tight, sealed, dust and insect free
Power	12V to 40V DC or 80VAC to 277 VAC, 50.60 Hz
LED Driver Efficiency	81% @ 12V / 91% @ 24V / 95% @ 40V
Luminous Efficacy	80 Lumens per watt
Color Temperature (CCT)	5100K
LED Lumens per LED Watt	2152@30W
Operating Temperature (Amb.)	-40° F to 120° F / -40 C to 48.88 C
Housing	Die cast corrosion resistant electroplated aluminum
Lens	Prismatic (Dome) or DSC (Dark Sky Compliant)
Suggested Mounting Height	18 to 35 feet / 5.49 to 10.67 meters
Mounting Hardware	Std., 2” Sch. 40, pipe / Std slipfitter

Sol[®]
Reliable. Renewable. Remarkable.

2 Quad LED Cobra Head

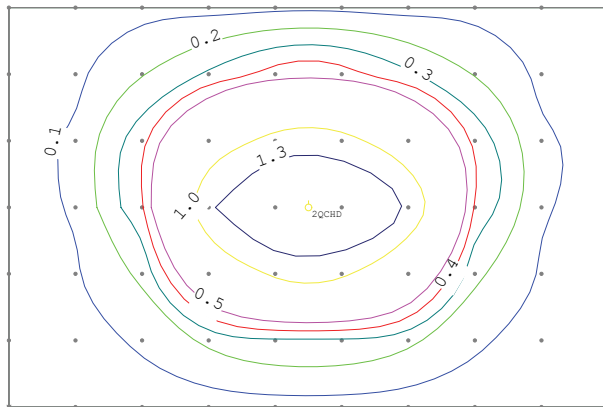
The better, brighter light fixture



Photometric Template 2Q DOME LED Fixture @ 20 Feet

EPA (Effective Projected Area): 0.9 sq. ft.

Typical Grid: Horizontal Illuminance Statistics
Ave: 0.29 fc Max/Min: 127.47
Max: 1.65 fc Ave/Min: 22.59
Min: 0.01 fc Std. Dev.: 0.40

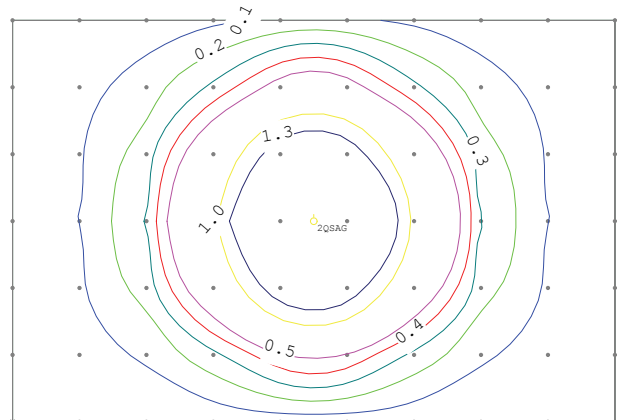


60 x 90 Foot Grid
(18.29 x 27.43 Meter Grid)

Photometric Template 2Q DSC LED Fixture @ 20 Feet

EPA (Effective Projected Area): 0.7 sq. ft.

Typical Grid: Horizontal Illuminance Statistics
Ave: 0.32 fc Max/Min: Undefined
Max: 2.26 fc Ave/Min: Undefined
Min: 0.00 fc Std. Dev.: 0.50



60 x 90 Foot Grid
(18.29 x 27.43 Meter Grid)



rev. 0410 MRKT-COBRA-002